

Professional, shared working environment Stratford, East London

Welcome to Us&Co

We are taking shared workspace in Stratford to the next level and creating a professional working environment for freelancers, start-ups and established businesses- whether you need a single desk, an office for 5 people or a whole floor for 150 we can accommodate you.

There are 6 floors and over 30,000 sq. ft of private offices, fixed desks, hot desks, meeting rooms, modern training rooms and a stunning breakout space suitable for hosting events and receptions.



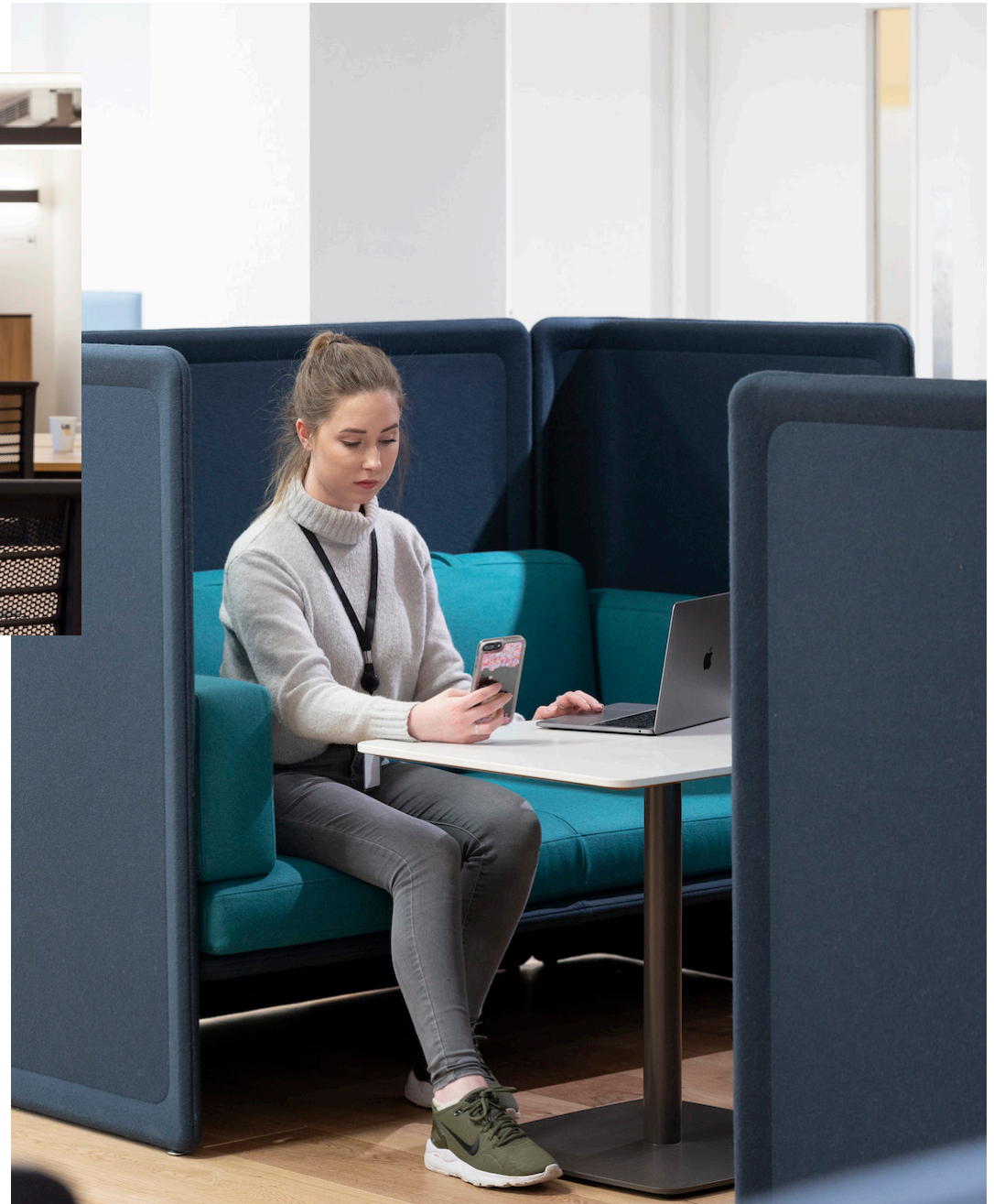


Private Offices

All offices are fully furnished and have loads of natural light. You can have a private office with 5, 12 or 24 desks or take a whole floor with 150 desks. On every floor there is a spacious kitchen and breakout space. High speed secure internet is available throughout the building, whilst dedicated bandwidth can be provided on request.

From: £350

+vat per desk p/m special introductory offer





Fixed Desk/Hot Desk

On the first floor you will find our dedicated co-working area. Pick a space, plug in your laptop, help yourself to our fresh ground coffee and start working using our high-speed internet. This area offers access to plenty of breakout space—great for taking a quiet break or making a phone call.

Fixed desk: 24/7 access and a dedicated desk of your own with an ergonomic chair and lockable pedestal. Flexible membership, available on a monthly rolling contract with no deposit.

Hot desk: Monday – Friday 8am-6pm access to shared work space in a dynamic environment. Flexible membership, available on a monthly rolling contract with no deposit or as a day pass.

Day Pass
From: £20
+vat per desk p/d

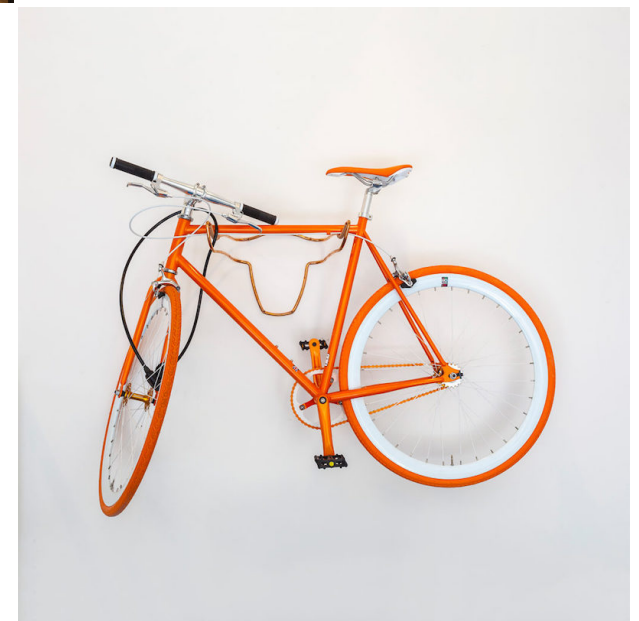
Hot Desk
From: £125
+vat per desk p/m

Fixed Desk
From: £250
+vat per desk p/m



Amenities

- ✔ Free super-fast WiFi
- ✔ Plenty of natural light
- ✔ Ground floor break-out area & event space
- ✔ Fully air-conditioned offices
- ✔ Freshly ground coffee
- ✔ Onsite support team
- ✔ Meeting & Training rooms
- ✔ Conference facilities
- ✔ Bike storage
- ✔ Showers
- ✔ Still & sparkling water
- ✔ Phone booths for private conversations



Meeting Rooms

We have designed a range of rooms for meetings, training days and brain storming sessions. You can have a meeting room for 6, a boardroom for 14, a training room for 20 attendees or a conference room for 60.

These are high-tech meeting rooms with super-fast WiFi and easy connectivity to large high definition screens for presentations or screen sharing. Tea, coffee, biscuits and still & sparkling water are all included. A range of catering packages are available on request.

From £20
+vat p/hour



Club Space

Our ground floor club space is open to all members. A striking copper bar is surrounded by café tables, a sofa and chairs where all members can relax, meet and network or entertain guests.

This space is available for events, drinks receptions, parties and other social gatherings with a wide range of catering options.





Hotels

Holiday Inn Express, Travelodge and the Westbridge Hotel are all a couple of minutes' walk away. Close to Westfield Stratford City, Moxy, Premier Inn, another Holiday Inn and Staybridge Suites provide multiple options.



Transport

We are only a short walk to both Stratford, Stratford High Street and Stratford International stations providing super-fast reliable links to the City of London, London City Airport, Eurostar and the West End. Crossrail services are due to open at Stratford in 2020 and will get to Bond Street in 15 minutes and Heathrow in 45 minutes.

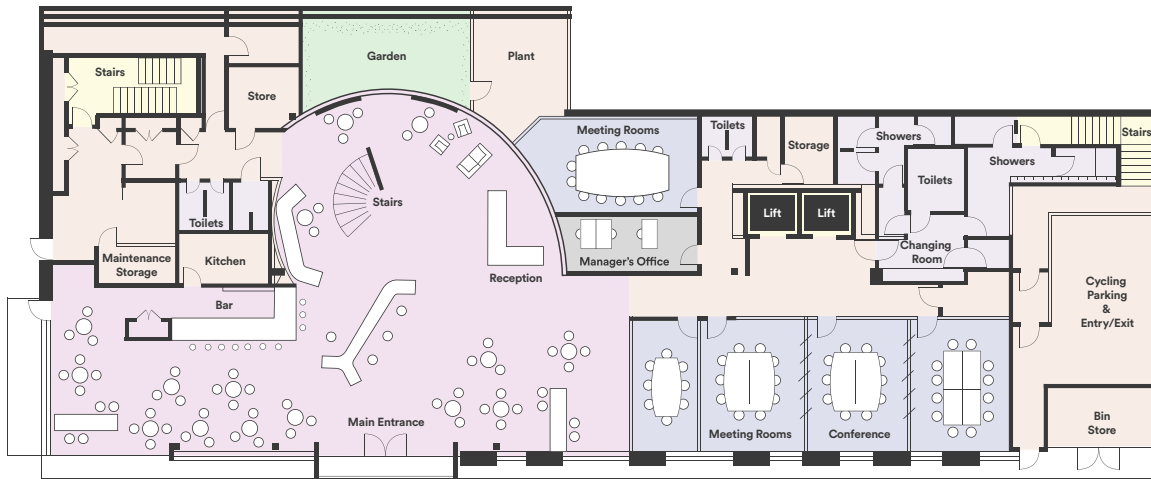
The building also benefits from being connected to the Cycle Super Highway allowing easy access into East London and the City.



Retail & Restaurants

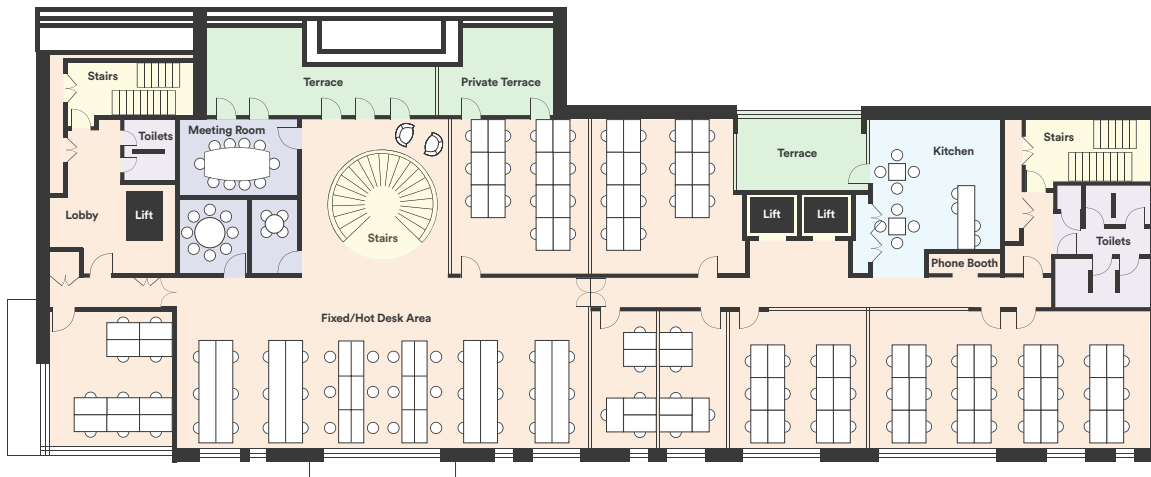
Under 7 minutes' walk to Westfield Stratford City. With over 223 stores ranging from high street to very high end designer brands, the Westfield Stratford City centre offers something for everyone under a single roof.

There are also a huge number of places to eat and drink, with 72 eateries supplying almost any kind of food and drink you can imagine!



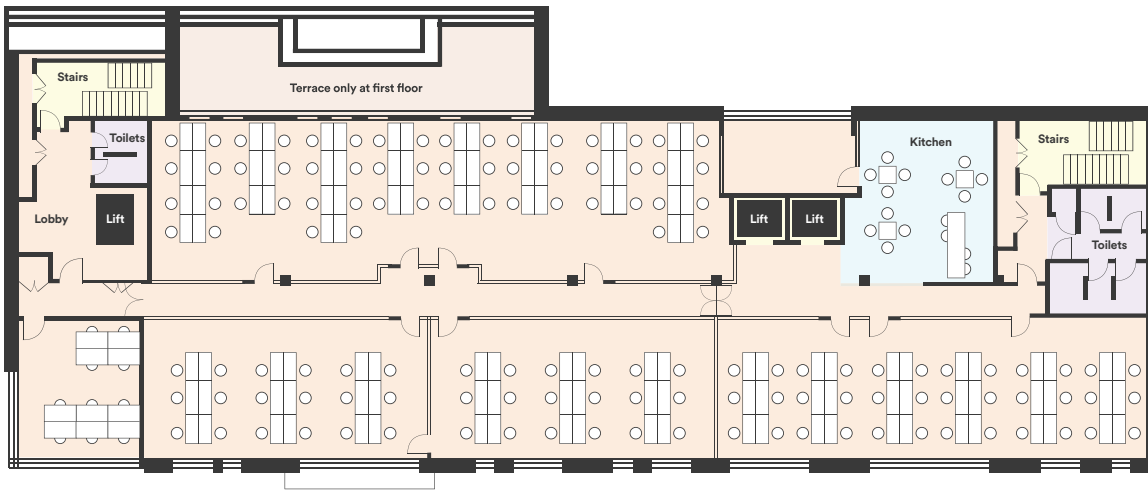
Ground floor

Reception area, meeting & training rooms, conference suite.



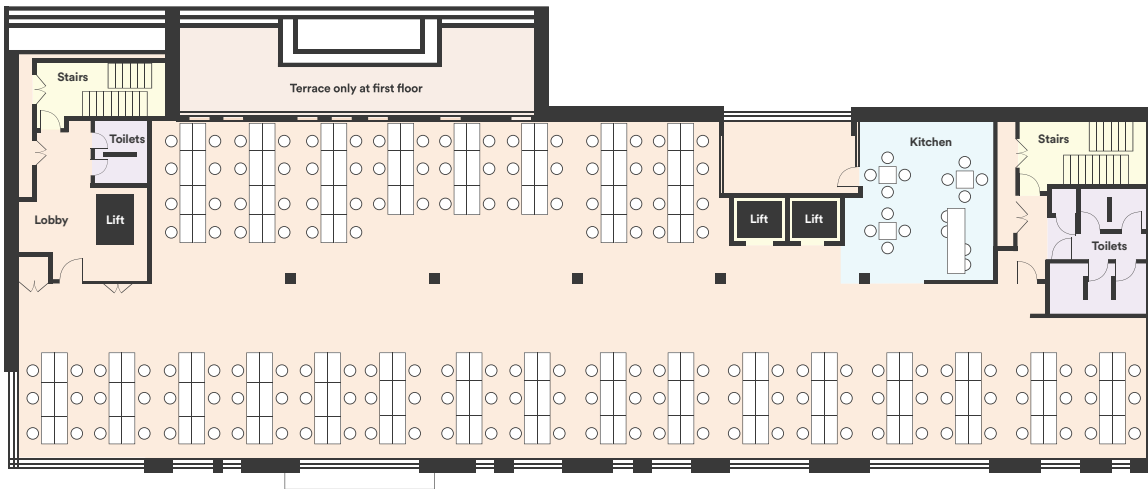
First floor private offices

Hot Desks, Fixed Desks, Private Offices and Meeting Rooms. Offices can be reconfigured to create a bespoke layout.



Floor as private offices

Floor divided to create private offices with a shared breakout and kitchen area.



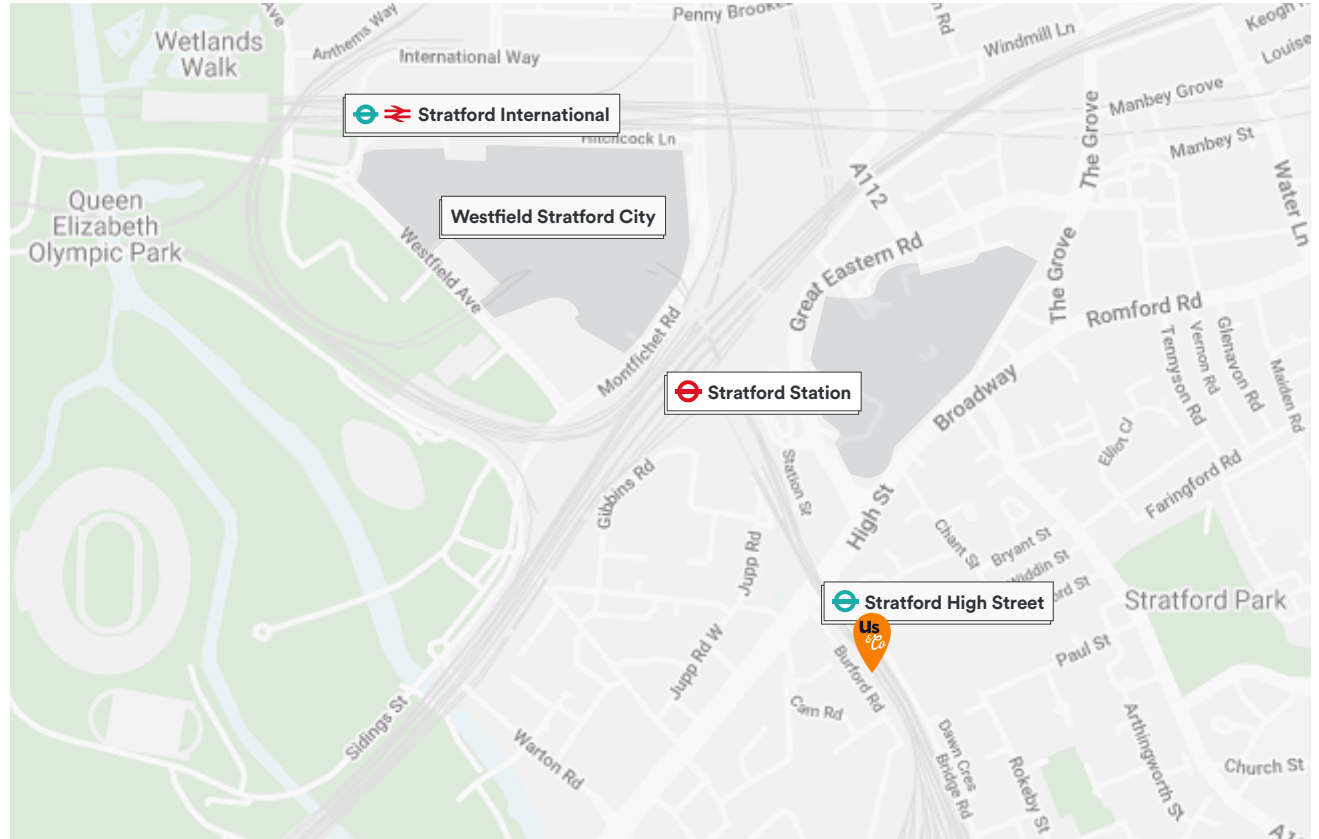
Floor as open plan

Ideal for companies who require a large open space for up to 150 employees. This area has its own breakout area, kitchen and wc's.







Contact

Us&Co Stratford
 11 Burford Road
 London E15 2SP

enquiries@usandco.com
 020 3031 3531



Travel time to destinations

Stratford High Street 	1 min
Stratford Station   	6 min
Stratford International  	13 min




By Central Line

Bank & Liverpool St 	9-11 min
Oxford Circus 	18 min

By Jubilee Line

Canary Wharf 	9 min
London Bridge 	16 min

By DLR & South Eastern Rail

Stratford International 	4 min
Eurostar St. Pancras 	7 min
City Airport 	13 min

Please note that the photographs are from other Us&Co buildings.