

# Stunning event spaces in Monument, London

---

## Welcome to Us&Co

Preparing for networking & corporate events, company parties and other social gatherings. We have stunning, flexible spaces for large gatherings both indoor and outdoor, complete with a fully equipped professional kitchen offering a wide range of catering options.

Whether you're planning a summer party or looking for the ideal office Christmas party venue, our unique spaces will be on hand to deliver. Simply let us know the proposed date, rough number of guests and a little more information about the event.



---

## 9th Floor Club Space Monument, London

Event Space Capacity 60 seated, 100 standing.

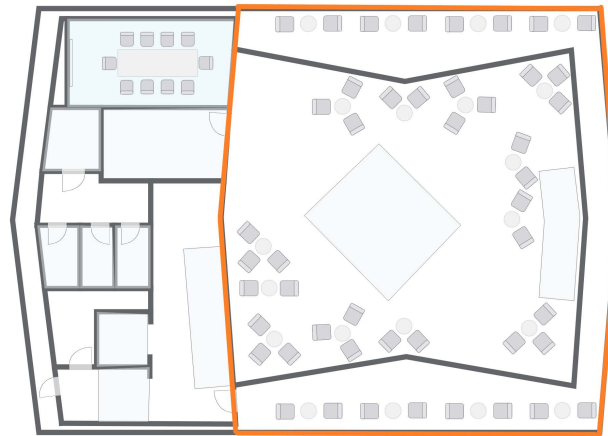
On the top floor of our building is our Club Space which has panoramic views over the Thames and the City. There are two terraces accessed via large glass doors which, when opened, offer a unique indoor-outdoor event experience. At the heart of the floor sits a stunning copper bar surrounded by cafe tables, sofas and chairs, allowing flexibility to host a formal or more relaxed event.

A fully equipped professional kitchen is available for a wide range of catering options, from canapes, to hot buffets or drink receptions.

Includes:

- + Unlimited refreshments (tea, coffee, water)
- + Full AV equipment
- + Terrace
- + Cloakroom
- + On-site staff
- + Security
- + Wi-Fi

**£400+vat per hour**  
**(min. 3hrs booking)**







---

## Amenities

- ✔ Free super-fast Wi-Fi
- ✔ Plenty of natural daylight
- ✔ On-site support team
- ✔ Air-conditioned spaces
- ✔ Fresh ground coffee
- ✔ Terrace with stunning views
- ✔ Meeting & Training rooms
- ✔ Conference facilities
- ✔ Bike storage
- ✔ Showers
- ✔ Still & sparkling water
- ✔ Phone booths for private conversations





# Monument, London

---

## Retail

Under 5 minutes walk to Leadenhall Market and 10 minutes from Borough Market with their many stalls, shops, bars and places to eat.

---

## Restaurants & Hotels

Surrounded by a wide variety of restaurants, pubs and wine bars, from the elegant Fenchurch at the Walkie Talkie Sky Gardens to the vast BrewDog Pub and Brewery in Great Tower Street. A full range of hotels are on our doorstep from the Four Seasons, the City's only 5 star hotel to budget and trendy hotels like Citizen M.

---

## Transport

Us&Co is a few minutes' walk from Monument, Bank, Tower Bridge and London Bridge tube and train stations. The Cycle Superhighway runs just south of our building.



Leadenhall Market



Monument Station








BrewDog

# Us&Co Monument

## Contact

Us&Co Monument 7 Harp Lane,  
London EC3R 6DP

meetingandevents@usandco.com  
0203 031 3531

<b>Monument</b>		3 min walk
<b>Tower Hill</b>		5 min walk
<b>Fenchurch Street</b>		6 min walk
<b>Bank</b>		10 min walk
<b>London Bridge</b>		10 min walk

